



VEHICLE LIFT ECH

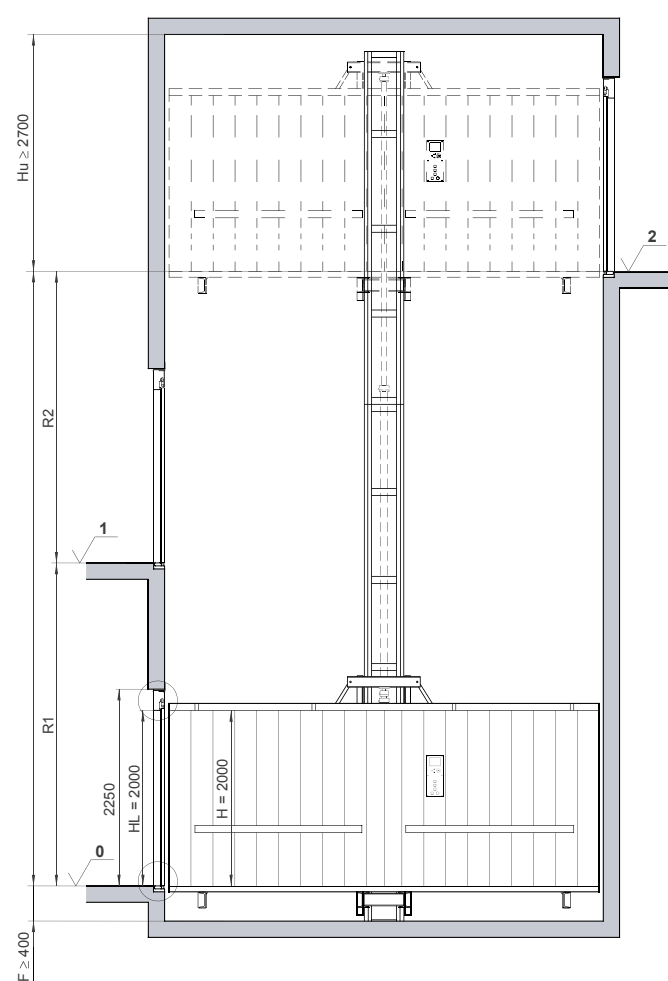
The ECH lift is designed for the vertical transportation of vehicles including their occupants.

Machinery Directive

It is a lifting platform with direct acting hydraulic drive. The lifting platform has two facing guiding columns, one on each side of the car. The sling and the cylinders are supplied preassembled on these columns.

It is ideal for installation in buildings with a garage to be used for one or more families (where the construction of an access ramp is not possible) or to replace existing vehicle lifts.

The quality of the ECH lift exceeds that of other vehicle lifts due to its greater stability. The two-column design can lift heavier loads and be made up to 3 meters wide.



Minimum shaft dimensions, elevation view

- R** Travel
- F** Pit (maximum 1,800 mm)
- Hu** Headroom
- H** Car height
- HL** Door clear height

VEHICLE LIFTS: TO MAKE THE MOST OF THE SPACE

QHV and ECH models are specially designed for the vertical transport of vehicles and their occupants. They are ideal to take advantage of spaces where space is limited and have the best security measures.

- **QHV**: Hydraulically operated vehicle lift (elevator directive), perfect for saving levels in any type of building.

The lift is compliant with the 2014/33/EC Lifts Directive and may, therefore, be marketed in any country of the European Union. Conformity by way of compliance with harmonised standard EN 81-20. Different solutions to those of the standard are applied for some options. It has EU Design Examination certificates issued by AENOR for its conformity with the Directive. Any deviations from the standards of reference are indicated in the corresponding sections of the document.

- **ECH**: Vehicle lift (machinery directive) indicated for installation in garages of private homes or small buildings.

EC declaration of conformity issued by Hidral, certified by AENOR for the design and manufacture of machinery contained in Appendix IV Category 17 of the Machinery Directive 2006/42/EC. The lift will comply with the Machinery Directive provided that it is put into service according to the requirements set out in the installation plan and assembly instructions provided by Hidral and supplying all the installation safety components.

C/ PARSÍ 7, N° 3 - 41016 Sevilla - Spain

t. + 34 954 514 500 - f. +34 954 677 633

www.hidral.com



All Hidral products and services are guaranteed by an AENOR (Spanish Association for Standardisation and Certification) certificate. This document certifies that Hidral's Quality System is managed, designed and implemented in accordance with International Standard ISO 9001:2000. It is also an extra guarantee for its customers, who know they can trust its commitment and expertise.

FL590_V2



VEHICLE LIFTS



Product marketed in the US

VEHICLE LIFT QHV

QHV vehicle lift is specially designed for the vertical transport of vehicles with their occupants. It is perfect for apartment buildings, offices, public car parks and any other place where it is essential to make the best use of the space.

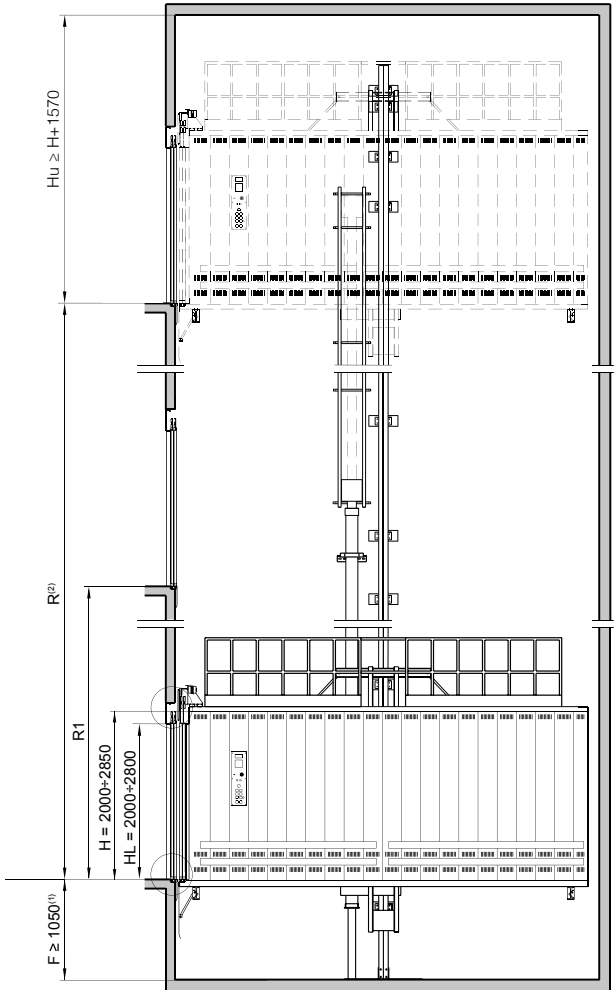
Lift Directive

Permanently installed vehicle lift with hydraulic drive for the vertical transport of vehicles with their occupants with defined landing levels with a large cabin and high configuration possibilities.

The car structure is made up of two frames, each suspended from a cylinder and connected by two central support beams, on which the floor rests, and two upper beams. Two support beams are also included on the entrance ends of the lift floor, braced to the top of the slings.

Hidral’s products are a worldwide reference in terms of performance and quality perceived by the end user.

R Travel
F Pit (maximum 1,800 mm)
Hu Headroom
H Car height
HL Door clear height
Possibility of smaller Hu with safety system for low headroom.



Minimum shaft dimensions, elevation view

QHV

VEHICLE LIFT



QHV vehicle lift is specially designed for residential buildings, offices, public parking and any space where the optimum utilization of space is essential.

GENERAL CHARACTERISTICS

Model	QHV
Load capacity	3.500-5.000 kg (According to EN 81.20)
Surface area	21 m²
Maximum travel*	24 m
Speed	0,2-0,6 m/s
Entrance	Single or double (180°)
Stops	6

(*) Consult for greater travel distances.

AESTHETIC AND FUNCTIONAL SOLUTIONS

In the car

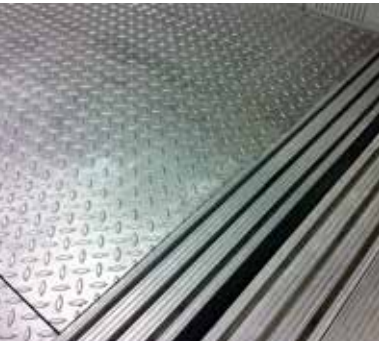
- Walls in painted sheet metal or brushed stainless steel (optional).
- Doors with a painted or stainless steel finish.
- Floor in painted high-grip chequered plate, aluminium diamond plate or stainless steel diamond plate (other possibilities available upon request).
- LED downlights.
- Aluminium profile sills as standard, suitable for car wheels or for entering light loads (possibility for the supply of reinforced aluminium and steel).
- Protection bumpers in different finishes.
- Forced ventilation, smoke extractor (optional) and hatch in the cab roof (optional).
- Possibility for the supply of remote controls.
- Possibility of the supply of traffic lights that facilitates greater fluidity in inbound and outbound traffic.
- Button panel on a stainless steel plate column built into both side panels of the car.

At landing

- Landing doors with a paint or stainless steel finish and the operating panel embedded in the doorframe or received on the floor, which can, optionally, include the floor display.
- Consult special decoration options.



Folded Steel impact protection (optional)



Detail of the diamond plate



Traffic lights

ECH

ECH VEHICLE LIFT



It is ideal for installation in buildings with a garage to be used by one or more families (where the construction of an access ramp is not possible) or to replace existing vehicle lifts.

GENERAL CHARACTERISTICS

Model	ECH
Load capacity	2.000 - 3.500 Kg
Surface area	17,5 m²
Maximum travel*	7 m
Speed	0,10 m/s
Entrance	Single or double (180°)
Stops	2 - 3

(*) Consult for greater travel distances.

AESTHETIC AND FUNCTIONAL SOLUTIONS

In the car

- Walls painted with a polyester-epoxy powder coating in light grey with matching metal protections (or wood as an option).
- Grey chequered plate. Lighting using fluorescent bulbs in the upper reinforcements of the side walls.
- COP (Car operating panel) with stop button, emergency lighting, intercom, load indicator and key enabling switch.
- Hold-to-run in the cabin with preference of use over landing push buttons.

At landing

- Automatic slat sliding doors with electric locking. They are stored at the side in the space between the guides and the shaft wall. High-resistance 40 mm thick bumpers (consult colours available).
- Button panel with key enabling switch and car busy light indicator. Call remote control (optional).



Double-lateral column (optional)



Detail of the protections



Hold-to-run operated